



JOINT VENTURE

Alka-Tech

LIBERTY VALVES®

INDUSTRIAL VALVES & FITTINGS CO.



IBR CERTIFIED

FIRE SAFE APPROVED



Regd. Office & Works : 15 & 16, Jinaam Industrial Estate, Near Dhumal Nagar, Waliv Road, Vasai (East), Dist. Thane - 401 208, INDIA. Tel.: +91 9833835078 / +91 9029969497

E-mail: john@alkatechvalves.com

Website: www.alkatechvalves.com

ENGINEERING DATA

HYDROSTATIC TEST PRESSURE (API 598/BS 6755 PART-1)

HYDROSTATIC PRESSURE Kg/cm ² (Psig)				
ASME CLASS	BODY	BACK SEAT*	SEAT	AIR TEST (SEAT)*
150	32 (455)	22 (315)	22 (315)	7 (100)
300	79 (1125)	57 (815)	57 (815)	7 (100)
600	156 (2225)	115 (1630)	115 (1630)	7 (100)
800	208 (3000)	141 (2000)	141 (2000)	7 (100)
900	236 (3350)	172 (2445)	172 (2445)	7 (100)
1500	392 (5575)	287 (4080)	287 (4080)	7 (100)
2500	652 (9275)	477 (6790)	477 (6790)	7 (100)

* FOR CHECK VALVE BACK SEAT & AIR TEST IS NOT APPLICABLE

TRIM MATERIAL :-

TRIM NO.	STEM	SEAT	WEDGE / DISC
1	13% Cr	13% Cr	13% Cr
8	13% Cr	STELLITE	13% Cr
5	13% Cr	STELLITE	STELLITE
2	SS304	SS304	SS304
-	SS304	STELLITE	SS304
15	SS304	STELLITE	STELLITE
10	SS316	SS316	SS316
12	SS316	STELLITE	SS316
16	SS316	STELLITE	STELLITE
9	NI-Cu ALLOY (MONEL)	MONEL	MONEL
13	ASTM B 473 (ALLOY-20)	ALLOY-20	ALLOY-20
20	BRONZE	BRONZE	BRONZE

IMPORTANT DATA

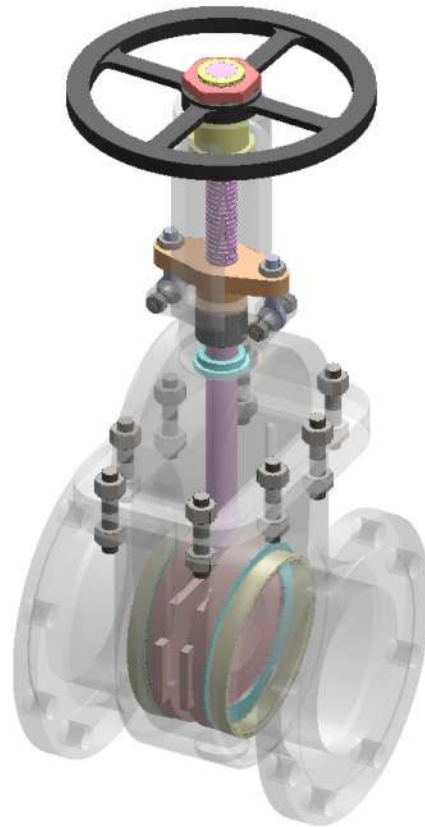
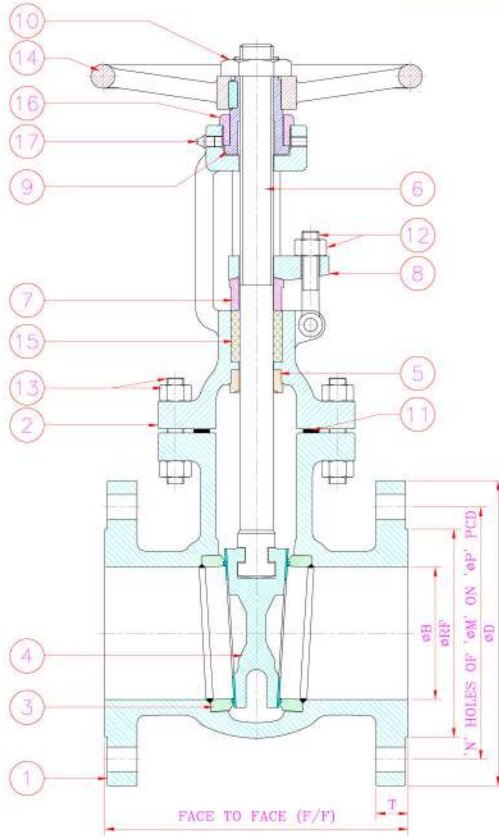
BODY MATERIAL :-

MATERIAL	CLASSIFICATION STEEL	ASTM REF.	RECOMMENDED TEMPERATURE LIMITS		APPLICATION
			°C	°F	
WCB / A105	Carbon	A 216 Gr. WCB	-25 TO 425	-20 TO 800	Steam, Water Oil, Oil Vapour, Gas & General Services
LCB / LF2	Carbon	A 352 Gr. LCB	-46 TO 350	-50 TO 650	Low Temperature
LCC	Carbon	A 352 Gr. LCC	-46 TO 350	-50 TO 650	Low Temperature
WC6 / F11	Chromium Moly 1.25% Cr, 0.5% Mo	A 217 Gr. WC6	-29 TO 590	-20 TO 1100	Steam, Water Oil, Oil Vapour, Gas & General Services
WC9 / F22	Chromium Moly 2.25% Cr, 1% Mo	A 217 Gr. WC9	-29 TO 590	-20 TO 1100	Steam, Water Oil, Oil Vapour, Gas & General Services
C5	Chromium Moly 5% Cr, 0.5% Mo	A 217 Gr. C5	-29 TO 650	-20 TO 1200	Corrosive / Erosive Oil Refinery Services
CF8M / SS316	Stainless 18% Cr, 9% Ni, 2% Mo	A 351 Gr. CF8M	-196 TO 815	-320 TO 1500	High & Low Temperature Corrosive Resistance
CF8 / SS304	Stainless 18% Cr, 8% Ni	A 351 Gr. CF8	-196 TO 815	-320 TO 1500	High & Low Temperature Corrosive Resistance
CF3M / SS316L	Low Carbon Stainless 18% Cr, 9% Ni, 2% Mo	A 351 Gr. CF3M	-196 TO 815	-320 TO 1500	Cryogenic Service is also available on Request
CF3 / SS304L	Low Carbon Stainless 18% Cr, 8% Ni	A 351 Gr. CF3	-196 TO 815	-320 TO 1500	Cryogenic Service is also available on Request
CN7M / ALLOY 20	Stainless 19% Cr, 29% Ni	A 351 Gr. CN7M	-196 TO 425	-320 TO 800	Corrosive Resistance

STANDARDS :-

VALVE TYPE	DESIGN STANDARD		COMPLIANCE	STANDARD
	SMALL BORE (1/2" - 1.1/2")	LARGE BORE (2" - 24")		
BALL VALVE	BS 5351 / BS EN ISO 17292 / API 6D		PRESSURE TEMPERATURE RATING	ASME B 16.34
GATE VALVE	API 602 / ISO 15761	API 600 / BS 1414 (ABOVE 24")	FACE TO FACE	ASME B 16.10
GLOBE VALVE	BS 5352 / ISO 15761	BS 1873	FLANGED END	ASME B 16.5 / BS-10 (TAB-D / TAB-E / TAB-F) / DIN (ND-10 / ND-16)
(LIFT / SWING) CHECK VALVE	ISO 15761 (LIFT TYPE)	BS 1868 (LIFT / SWING)	SOCKET END	ASME B 16.11
WAFFER CHECK VALVE	API 6D		SCREWED END	ASME B 1.20.1
NON SLAM CHECK VALVE	DIN EN 558-2		BUTT WELD END	ASME B 16.25
BUTTERFLY VALVE	API 609 CAT-A (CENTER DISC)		NACE	NACE MR 01 75
BUTTERFLY VALVE	API 609 CAT-B (OFFSET DISC)		INSPECTION & TESTING	API 598 / API 600 / BS 12266 PT-1 / BS 6755 PT-1 / API 609
PLUG VALVE	API 599 / API 6D		FIRE SAFE	API 6FA

GATE VALVE



MATERIAL SPECIFICATION :-

SR. NO.	PART NAME	MATERIAL	QTY.
1	BODY	WCB / LCB / WC6 / WC9 / C5 / C12 / CF8 / CF8M / CF3 / CF3M / CN7M	1 NO.
2	BONNET	WCB / LCB / WC6 / WC9 / C5 / C12 / CF8 / CF8M / CF3 / CF3M / CN7M	1 NO.
3	SEAT RING (INTEGRAL / RENEWABLE)	WCB / CF8 / CF8M / CF3 / CF3M / CN7M / INCONEL (13%Cr FACING OR HF)	2 NO.
4	WEDGE (SOLID / FLEXIBLE)	WCB / CF8 / CF8M / CF3 / CF3M / CN7M / INCONEL (13%Cr FACING OR HF)	1 NO.
5	BACKSEAT	AISI 410 / AISI 304 / AISI 304L / AISI 316 / AISI 316L / ALLOY-20 / INCONEL	1 NO.
6	STEM	AISI 410 / AISI 304 / AISI 304L / AISI 316 / AISI 316L / ALLOY-20 / INCONEL	1 NO.
7	GLAND BUSH	AISI 410 / AISI 304 / AISI 304L / AISI 316 / AISI 316L	1 NO.
8	GLAND FLANGE	CARBON STEEL / AISI 304 / AISI 304L / AISI 316 / AISI 316L	1 NO.
9	YOKE SLEEVE	AISI 4140	1 NO.
10	HANDWHEEL NUT	CARBON STEEL / STAINLESS STEEL	1 NO.
11	GASKET	SS304L / SS316L SPIRAL WOUND WITH GRAPHITE FILLER	1 NO.
12	EYE-BOLT & NUT	CARBON STEEL / STAINLESS STEEL	2 NO.
13	STUD & NUT	A 193 GR. B7 / A 193 GR. B8/B16 / A 320 GR. L7 / A194 GR. 8/4 / A 194 GR. 2H	AS REQ.
14	HAND WHEEL	S.G. IRON / M.I. / FAB. STEEL.	1 NO.
15	GLAND PACKING	GRAPHOIL	AS REQ.
16	YOKE BUSH	AISI 410 / AISI 304 / AISI 304L / AISI 316 / AISI 316L	1 NO.
17	GREASE NIPPLE	CADMIUM PLATED	1 NO.

DIMENSIONS :-

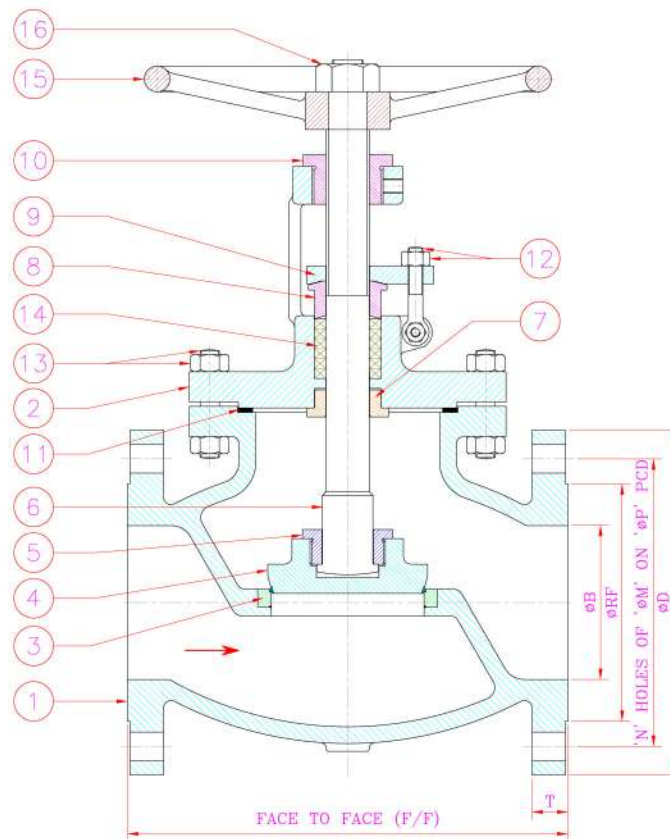
ALL THE DIMENSIONS ARE IN MM. UNLESS OTHERWISE STATED.

VALVE SIZE		F/F (ASME B16.10)		ASME B 16.5		FLANGE AS PER ASME B 16.5, CLASS 150#				FLANGE AS PER ASME B 16.5, CLASS 300#					
NB	INCH	150#	300#	ØB	ØRF	ØD	T	ØP	ØM	N	ØD	T	ØP	ØM	N
40	1.1/2"	165	190	38	73	127.0	14.2	98.4	16.0	4	155.6	20.6	114.3	22.3	4
50	2"	178	216	50	92	152.4	15.8	120.7	19.0	4	165.1	22.3	127.0	19.1	8
65	2.1/2"	191	241	65	105	177.8	17.4	139.7	19.0	4	190.5	25.4	149.2	22.3	8
80	3"	203	283	75	127	190.5	19.0	152.4	19.0	4	209.5	28.5	168.1	22.3	8
100	4"	229	305	100	157	228.6	23.8	190.5	19.0	8	254.0	31.8	200.1	22.3	8
125	5"	254	381	125	186	254.0	23.8	215.9	22.3	8	279.4	35.0	234.9	22.3	8
150	6"	267	403	150	216	279.4	25.4	241.3	22.3	8	317.5	36.5	269.7	22.3	12
200	8"	292	419	200	270	342.9	28.5	298.5	22.3	8	381.0	41.1	330.2	25.4	12
250	10"	330	457	250	324	406.4	30.2	362.0	25.4	12	444.5	47.7	387.3	28.5	16
300	12"	356	502	300	381	482.6	31.8	431.8	25.4	12	520.7	50.8	450.8	31.8	16
350	14"	381	562	350	413	533.4	35.1	476.2	28.4	12	584.2	54.0	514.3	31.8	20
400	16"	406	608	400	470	596.9	36.5	539.7	28.4	16	647.7	57.2	571.5	34.9	20
450	18"	432	654	450	533	635.0	39.6	577.8	31.7	16	711.0	60.3	628.6	34.9	24
500	20"	457	714	500	584	699.0	42.9	635.0	31.7	20	745.0	63.5	685.8	34.9	24
600	24"	508	813	600	692	813.0	47.7	749.3	35.0	20	914.0	69.8	812.8	41.3	24

NOTE:-

1. RAISED FACE HEIGHT IS 2mm
2. WE ALSO OFFER RTJ, BUTT WELD END, ETC & 600#, 1500# & 2500# ON REQUEST

GLOBE VALVE



MATERIAL SPECIFICATION :-

SR. NO.	PART NAME	MATERIAL	QTY.
1	BODY	WCB / LCB / WC6 / WC9 / C5 / C12 / CF8 / CF8M / CF3 / CF3M / CN7M	1 NO.
2	BONNET	WCB / LCB / WC6 / WC9 / C5 / C12 / CF8 / CF8M / CF3 / CF3M / CN7M	1 NO.
3	SEAT RING (INTEGRAL / RENEWABLE)	WCB / CF8 / CF8M / CF3 / CF3M / CN7M / INCONEL (13%Cr FACING OR HF)	1 NO.
4	DISC	WCB / CF8 / CF8M / CF3 / CF3M / CN7M / INCONEL (13%Cr FACING OR HF)	1 NO.
5	DISC NUT	AISI 410 / AISI 304 / AISI 304L / AISI 316 / AISI 316L / ALLOY-20 / INCONEL	1 NO.
6	STEM	AISI 410 / AISI 304 / AISI 304L / AISI 316 / AISI 316L / ALLOY-20 / INCONEL	1 NO.
7	BACK SEAT	AISI 410 / AISI 304 / AISI 304L / AISI 316 / AISI 316L / ALLOY-20 / INCONEL	1 NO.
8	GLAND BUSH	AISI 410 / AISI 304 / AISI 304L / AISI 316 / AISI 316L	1 NO.
9	GLAND FLANGE	CARBON STEEL / AISI 304 / AISI 304L / AISI 316 / AISI 316L	1 NO.
10	YOKE NUT	AISI 4140	1 NO.
11	GASKET	SS304L / SS316L SPIRAL WOUND WITH GRAPHITE FILLER	1 NO.
12	EYE-BOLT & NUT	CARBON STEEL / STAINLESS STEEL	2 NO.
13	STUD & NUT	A 193 GR. B7 / A 193 GR. B8/B16 / A 320 GR. L7 / A194 GR. 8/4 / A 194 GR. 2H	AS REQ.
14	GLAND PACKING	GRAPHOIL	AS REQ.
15	HANDWHEEL	S.G. IRON / M.I. / FAB. STEEL.	1 NO.
16	HANDWHEEL NUT	CARBON STEEL / STAINLESS STEEL	1 NO.

DIMENSIONS :-

ALL THE DIMENSIONS ARE IN MM. UNLESS OTHERWISE STATED.

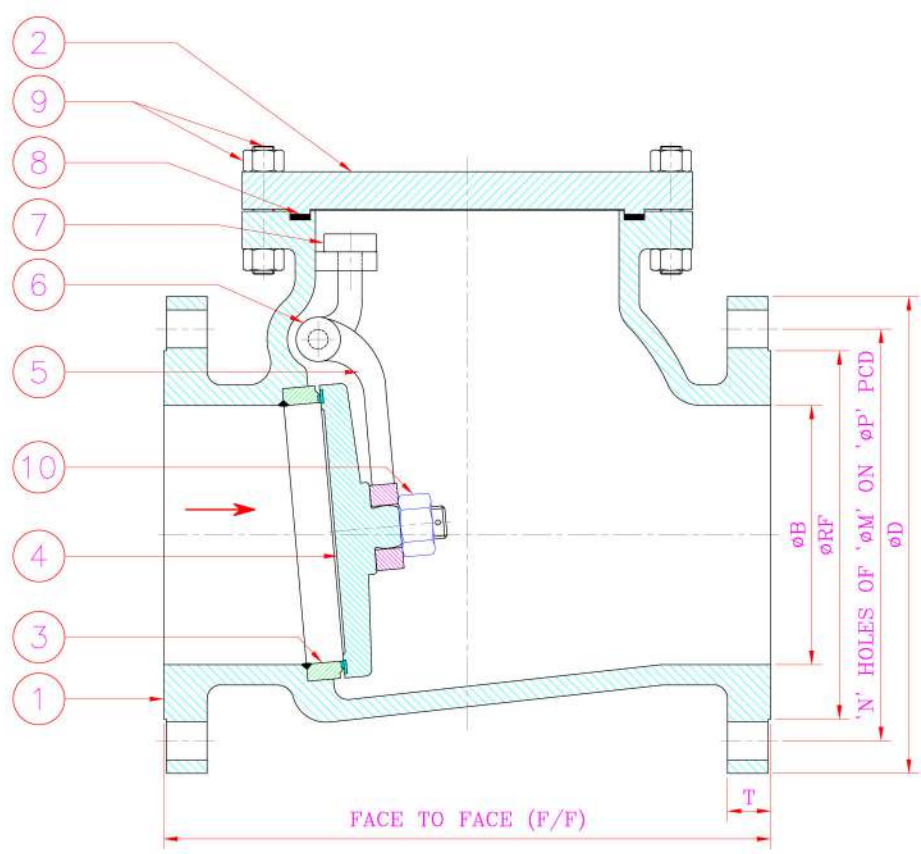
VALVE SIZE		F/F (ASME B16.10)		ASME B 16.5		FLANGE AS PER ASME B 16.5, CLASS 150#					FLANGE AS PER ASME B 16.5, CLASS 300#				
NB	INCH	150#	300#	øB	øRF	øD	T	øP	øM	N	øD	T	øP	øM	N
25	1"	127	203	25	51	108	11.6	79.4	16.0	4	123.8	17.4	88.9	19.1	4
40	1.1/2"	165	229	38	73	127.0	14.2	98.4	16.0	4	155.6	20.6	114.3	22.3	4
50	2"	203	267	50	92	152.4	15.8	120.7	19.0	4	165.1	22.3	127.0	19.1	8
65	2.1/2"	216	292	65	105	177.8	17.4	139.7	19.0	4	190.5	25.4	149.2	22.3	8
80	3"	241	318	75	127	190.5	19.0	152.4	19.0	4	209.5	28.5	168.1	22.3	8
100	4"	292	356	100	157	228.6	23.8	190.5	19.0	8	254.0	31.8	200.1	22.3	8
125	5"	356	400	125	186	254.0	23.8	215.9	22.3	8	279.4	35.0	234.9	22.3	8
150	6"	406	445	150	216	279.4	25.4	241.3	22.3	8	317.5	36.5	269.7	22.3	12
200	8"	495	559	200	270	342.9	28.5	298.5	22.3	8	381.0	41.1	330.2	25.4	12
250	10"	622	622	250	324	406.4	30.2	362.0	25.4	12	444.5	47.7	387.3	28.5	16
300	12"	699	711	300	381	482.6	31.8	431.8	25.4	12	520.7	50.8	450.8	31.8	16
350	14"	787	839	350	413	533.4	35.1	476.2	28.4	12	584.2	54.0	514.3	31.8	20
400	16"	914	864	400	470	596.9	36.5	539.7	28.4	16	647.7	57.2	571.5	34.9	20
450	18"	978	978	450	533	635.0	39.6	577.8	31.7	16	711.0	60.3	628.6	34.9	24
500	20"	978	1016	500	584	699.0	42.9	635.0	31.7	20	745.0	63.5	685.8	34.9	24
600	24"	1295	1346	600	692	813.0	47.7	749.3	35.0	20	914.0	69.8	812.8	41.3	24

NOTE:-

1. RAISED FACE HEIGHT IS 2mm
2. WE ALSO OFFER RTJ, BUTT WELD END, ETC & 600#, 1500# & 2500# ON REQUEST

GLOBE VALVE

CHECK VALVE



MATERIAL SPECIFICATION :-

SR. NO.	PART NAME	MATERIAL	QTY.
1	BODY	WCB / LCB / WC6 / WC9 / C5 / C12 / CF8 / CF8M / CF3 / CF3M / CN7M	1 NO.
2	COVER	WCB / LCB / WC6 / WC9 / C5 / C12 / CF8 / CF8M / CF3 / CF3M / CN7M	1 NO.
3	SEAT RING (INTEGRAL / RENEWABLE)	WCB / CF8 / CF8M / CF3 / CF3M / CN7M / INCONEL (13%Cr FACING OR HF)	2 NO.
4	DISC	WCB / CF8 / CF8M / CF3 / CF3M / CN7M / INCONEL (13%Cr FACING OR HF)	1 NO.
5	HINGE	AISI 410 / AISI 304 / AISI 304L / AISI 316 / AISI 316L / ALLOY-20 / INCONEL	1 NO.
6	HINGE PIN	AISI 410 / AISI 304 / AISI 304L / AISI 316 / AISI 316L / ALLOY-20 / INCONEL	1 NO.
7	BRACKET	AISI 410 / AISI 304 / AISI 304L / AISI 316 / AISI 316L / ALLOY-20 / INCONEL	1 NO.
8	GASKET	SS304L / SS316L SPIRAL WOUND WITH GRAPHITE FILLER	1 NO.
9	STUD & NUT	A 193 GR. B7 / A 193 GR. B8/B16 / A 320 GR. L7 / A194 GR. 8/4 / A 194 GR. 2H	AS REQ.
10	DISC NUT	AISI 410 / AISI 304 / AISI 304L / AISI 316 / AISI 316L / ALLOY-20 / INCONEL	1 NO.

DIMENSIONS :-

ALL THE DIMENSIONS ARE IN MM. UNLESS OTHERWISE STATED.

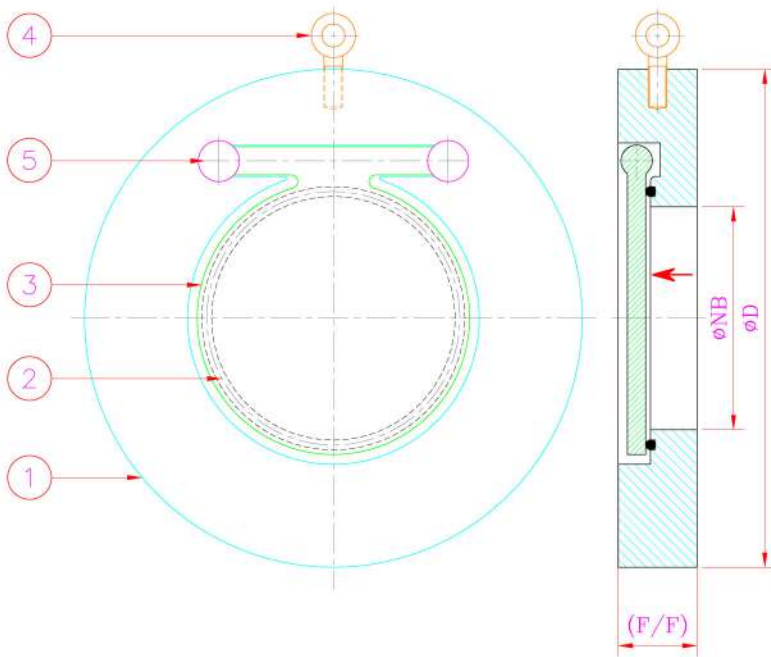
VALVE SIZE		F/F (ASME B16.10)		ASME B 16.5		FLANGE AS PER ASME B 16.5, CLASS 150#					FLANGE AS PER ASME B 16.5, CLASS 300#				
NB	INCH	150#	300#	ØB	ØRF	ØD	T	ØP	ØM	N	ØD	T	ØP	ØM	N
40	1.1/2"	165	241	38	73	127.0	14.2	98.4	16.0	4	155.6	20.6	114.3	22.3	4
50	2"	203	267	50	92	152.4	15.8	120.7	19.0	4	165.1	22.3	127.0	19.1	8
65	2.1/2"	216	292	65	105	177.8	17.4	139.7	19.0	4	190.5	25.4	149.2	22.3	8
80	3"	241	318	75	127	190.5	19.0	152.4	19.0	4	209.5	28.5	168.1	22.3	8
100	4"	292	356	100	157	228.6	23.8	190.5	19.0	8	254.0	31.8	200.1	22.3	8
125	5"	330	400	125	186	254.0	23.8	215.9	22.3	8	279.4	35.0	234.9	22.3	8
150	6"	356	445	150	216	279.4	25.4	241.3	22.3	8	317.5	36.5	269.7	22.3	12
200	8"	495	533	200	270	342.9	28.5	298.5	22.3	8	381.0	41.1	330.2	25.4	12
250	10"	622	622	250	324	406.4	30.2	362.0	25.4	12	444.5	47.7	387.3	28.5	16
300	12"	699	711	300	381	482.6	31.8	431.8	25.4	12	520.7	50.8	450.8	31.8	16
350	14"	787	838	350	413	533.4	35.1	476.2	28.4	12	584.2	54.0	514.3	31.8	20
400	16"	864	864	400	470	596.9	36.5	539.7	28.4	16	647.7	57.2	571.5	34.9	20
450	18"	978	978	450	533	635.0	39.6	577.8	31.7	16	711.0	60.3	628.6	34.9	24
500	20"	978	1016	500	584	699.0	42.9	635.0	31.7	20	745.0	63.5	685.8	34.9	24
600	24"	1295	1346	600	692	813.0	47.7	749.3	35.0	20	914.0	69.8	812.8	41.3	24

NOTE:-

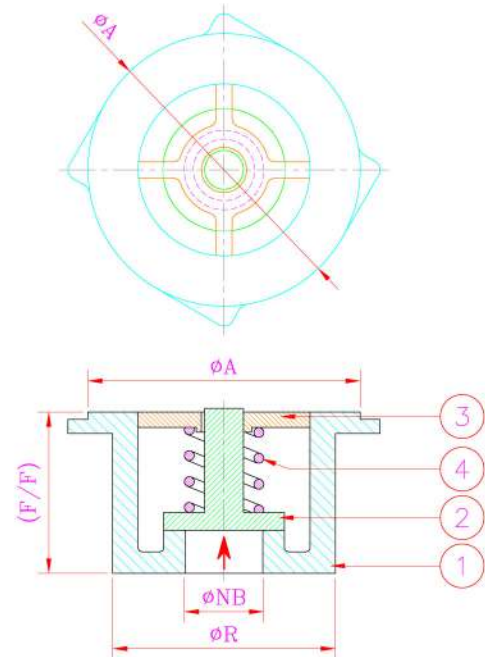
1. RAISED FACE HEIGHT IS 2mm
2. WE ALSO OFFER RTJ, BUTT WELD END, ETC & 600#, 1500# & 2500# ON REQUEST

CHECK VALVE

WAFER CHECK VALVE



SWING TYPE WAFER CHECK



NON SLAM WAFER CHECK

MATERIAL SPECIFICATION (SWING TYPE) :-

SR. NO.	PART NAME	MATERIAL	QTY.
1	BODY	WCB / SG IRON / LCB / WC6 / WC9/ C5 / C12 / CF8 / CF8M / CF3 / CF3M / CN7M	1 NO.
2	DISC	WCB / SG IRON / LCB / WC6 / WC9/ C5 / C12 / CF8 / CF8M / CF3 / CF3M / CN7M	1 NO.
3	SEAT RING	PTFE / VITON / EPDM / NITRILE / METAL SEATED	1 NO.
4	LIFTING BOLT	CARBON STEEL / STAINLESS STEEL	1 NO.
5	BUTTON	AISI 304 / AISI 304L / AISI 316 / AISI 316L / ALLOY-20	2 NO.

MATERIAL SPECIFICATION (NON SLAM TYPE) :-

SR. NO.	PART NAME	MATERIAL	QTY.
1	BODY	CF8 / CF8M / CF3 / CF3M / CN7M	1 NO.
2	DISC	CF8 / CF8M / CF3 / CF3M / CN7M	1 NO.
3	STAR (YOKE)	CF8 / CF8M / CF3 / CF3M / CN7M	1 NO.
4	SPRING	AISI 316 / AISI 316L	1 NO.

DIMENSIONS :-

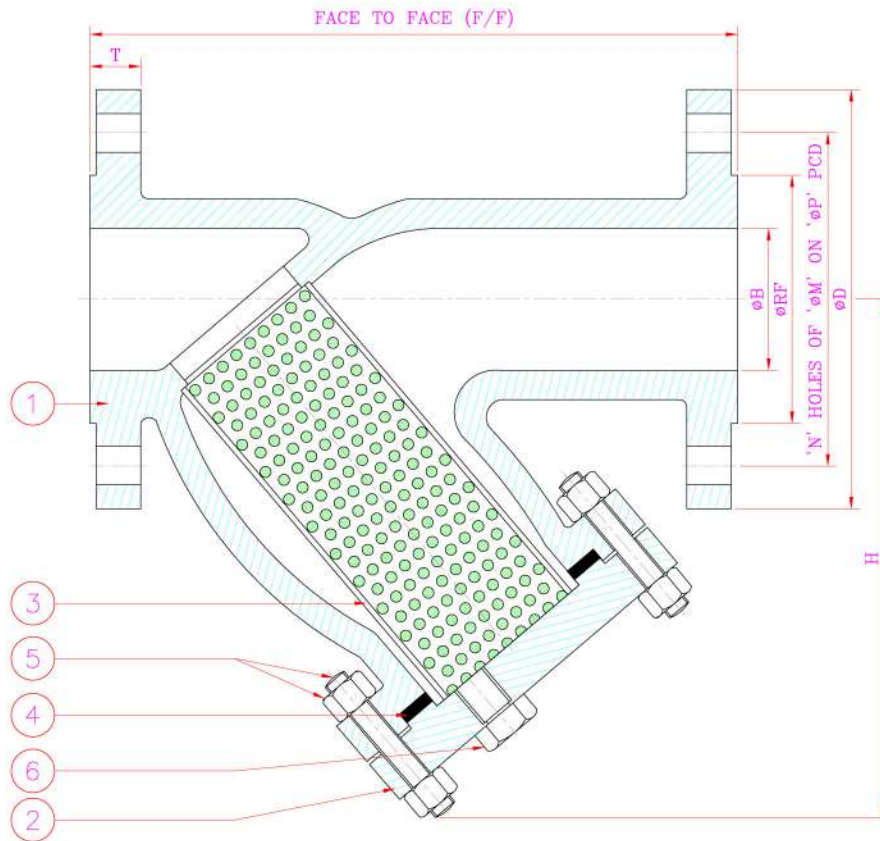
VALVE SIZE		SWING TYPE						
NB	INCH	ASME B 16.10	φB	φD				
		F/F		PN 10	PN 16	BS-10 T/D	BS-10 T/E	ASA 150#
40	1.1/2"	19.0	22	93	93	86	86	86
50	2"	19.0	30	108	108	97	97	104
65	2.1/2"	19.0	40	128	128	110	110	123
80	3"	19.0	52	143	143	129	129	136
100	4"	19.0	71	163	163	161	161	174
125	5"	19.0	93	193	193	193	193	196
150	6"	19.0	114	219	219	218	215	221
200	8"	28.5	157	274	274	274	272	278
250	10"	28.5	195	329	329	335	335	339
300	12"	38.0	230	379	385	385	383	409
350	14"	44.5	270	438	444	446	446	449
400	16"	51.0	310	489	496	496	496	512
450	18"	60.5	360	538	555	559	559	545
500	20"	63.5	406	593	616	616	616	602
600	24"	70.0	490	695	733	727	727	714

ALL THE DIMENSIONS ARE IN MM. UNLESS OTHERWISE STATED.

VALVE SIZE		NON SLAM			
NB	INCH	PN 25 / PN 40			
		F/F	φNB	φR	φA
15	1/2"	17.0	15	36.0	42.0
20	3/4"	20.0	19	45.0	52.0
25	1"	23.0	25	55.0	63.0
40	1.1/2"	32.0	40	77.0	85.0
50	2"	40.0	50	92.0	95.0
65	2.1/2"	46.0	65	105.0	115.0
80	3"	50.0	80	126.0	133.0
100	4"	60.0	100	154.0	154.0
125	5"	85.0	125	186.0	186.0
150	6"	105.0	150	216.0	222.0
200	8"	140.0	200	270.0	275.0

NOTE:- METAL TO METAL SEATED WITH ZERO LEAKAGE

STRAINER (Y-TYPE)



MATERIAL SPECIFICATION :-

SR. NO.	PART NAME	MATERIAL	QTY.
1	BODY	WCB / LCB / WC6 / WC9/ C5 / C12 / CF8 / CF8M / CF3 / CF3M	1 NO.
2	COVER	WCB / LCB / WC6 / WC9/ C5 / C12 / CF8 / CF8M / CF3 / CF3M	1 NO.
3	SCREEN	SS304 / SS304L / SS316 /SS316L (40 MESH / 60 MESH / 80 MESH / 100 MESH)	1 NO.
4	GASKET	PTFE / SPIRAL WOUND + GRAPHITE FILLER (SS304 / SS304L/ SS316 / SS316L)	1 NO.
5	STUD / NUT	A 193 GR. B7 / A 193 GR. B8/B16 / A 320 GR. L7 / A194 GR. 8/4 / A 194 GR. 2H	AS REQ.
6	DRAIN PLUG	CARBON STEEL / STAINLESS STEEL	1 NO.

DIMENSIONS :-

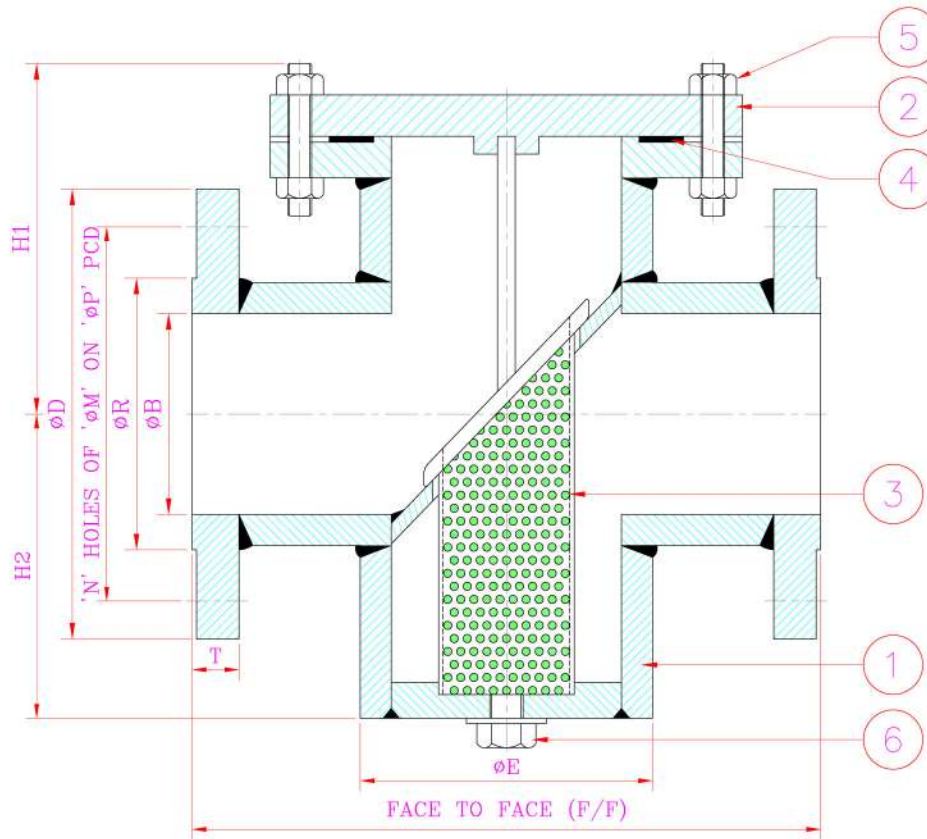
ALL THE DIMENSIONS ARE IN MM. UNLESS OTHERWISE STATED.

VALVE SIZE		MANUF. STD.	FLANGE AS PER ASME B 16.5, CLASS 150#							(HEIGHT)
NB	INCH	F/F	ØB	ØRF	ØD	T	ØP	ØM	N	H
25	1"	160	25	51	108.0	11.2	79.4	16.0	4	-
40	1.1/2"	200	38	73	127.0	14.2	98.4	16.0	4	-
50	2"	203	50	92	152.4	15.8	120.7	19.0	4	-
65	2.1/2"	216	65	105	177.8	17.4	139.7	19.0	4	-
80	3"	241	75	127	190.5	19.0	152.4	19.0	4	-
100	4"	292	100	157	228.6	23.8	190.5	19.0	8	-
150	6"	406	150	216	279.4	25.4	241.3	22.3	8	-
200	8"	495	200	270	342.9	28.5	298.5	22.3	8	-
250	10"	622	250	324	406.4	30.2	362.0	25.4	12	-
300	12"	699	300	381	482.6	31.8	431.8	25.4	12	-
350	14"	787	350	413	533.4	35.1	476.2	28.4	12	-
400	16"	914	400	470	596.9	36.5	539.7	28.4	16	-

NOTE:-

1. RAISED FACE HEIGHT IS 2mm
2. WE ALSO OFFER RTJ, BUTT WELD END, ETC & 300#, 600#, 1500# & 2500# ON REQUEST

STRAINER (BASKET TYPE)



MATERIAL SPECIFICATION :-

SR. NO.	PART NAME	MATERIAL	QTY.
1	BODY	WCB / LCB / WC6 / WC9 / C5 / C12 / CF8 / CF8M / CF3 / CF3M	1 NO.
2	COVER	WCB / LCB / WC6 / WC9 / C5 / C12 / CF8 / CF8M / CF3 / CF3M	1 NO.
3	SCREEN	SS304 / SS304L / SS316 / SS316L (40 MESH / 60 MESH / 80 MESH / 100 MESH)	1 NO.
4	GASKET	PTFE / SPIRAL WOUND + GRAPHITE FILLER (SS304 / SS304L / SS316 / SS316L)	1 NO.
5	STUD / NUT	A 193 GR. B7 / A 193 GR. B8/B16 / A 320 GR. L7 / A194 GR. 8/4 / A 194 GR. 2H	AS REQ.
6	DRAIN PLUG	CARBON STEEL / STAINLESS STEEL	1 NO.

DIMENSIONS :-

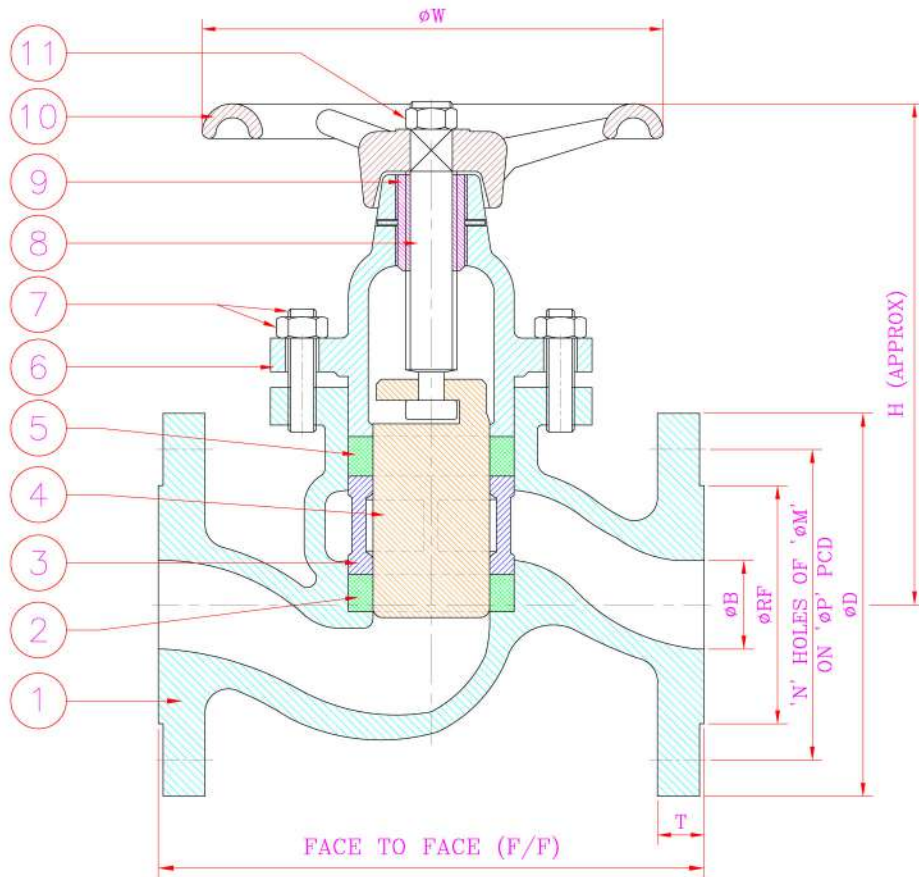
ALL THE DIMENSIONS ARE IN MM. UNLESS OTHERWISE STATED.

VALVE SIZE		MANUF. STD.	FLANGE AS PER ASME B 16.5, CLASS 150#							(HEIGHT)	
NB	INCH		F/F	ØB	ØRF	ØD	T	ØP	ØM	N	H1
50	2"	203	50	92	152.4	15.8	120.7	19.0	4	108	103
80	3"	241	75	127	190.5	19.0	152.4	19.0	4	133	150
100	4"	292	100	157	228.6	23.8	190.5	19.0	8	163	181
150	6"	356	150	216	279.4	25.4	241.3	22.3	8	190	259
200	8"	441	200	270	342.9	28.5	298.5	22.3	8	285	338
250	10"	503	250	324	406.4	30.2	362.0	25.4	12	323	416
300	12"	598	300	381	482.6	31.8	431.8	25.4	12	371	494
350	14"	667	350	413	533.4	35.1	476.2	28.4	12	408	572
400	16"	730	400	470	596.9	36.5	539.7	28.4	16	448	650
450	18"	850	450	533	635.0	39.6	577.8	31.7	16	478	728
500	20"	868	500	584	699.0	42.9	635.0	31.7	20	522	806
600	24"	893	600	692	813.0	47.7	749.3	35.0	20	599	963

NOTE:-

1. RAISED FACE HEIGHT IS 2mm
2. WE ALSO OFFER RTJ, BUTT WELD END, ETC & 300#, 600#, 1500# & 2500# ON REQUEST

PISTON VALVE



MATERIAL SPECIFICATION :-

SR. NO.	PART NAME	MATERIAL	QTY.
1	BODY	WCB / LCB / WC6 / WC9/ C5 / C12 / CF8 / CF8M / CF3 / CF3M / CN7M	1 NO.
2	LOWER RING	EQUIVALENT KFK	1 NO.
3	SUPPORT RING	WCB / LCB / WC6 / WC9/ C5 / C12 / CF8 / CF8M / CF3 / CF3M / CN7M	1 NO.
4	PISTON	AISI 410 / AISI 304 / AISI 304L / AISI 316 / AISI 316L / ALLOY-20 / INCONEL	1 NO.
5	UPPER RING	EQUIVALENT KOR-P	1 NO.
6	BONNET	WCB / LCB / WC6 / WC9/ C5 / C12 / CF8 / CF8M / CF3 / CF3M / CN7M	1 NO.
7	STUD / NUT	A 193 GR. B7 / A 193 GR. B8/B16 / A 320 GR. L7 / A194 GR. 8/4 / A 194 GR. 2H	AS REQ.
8	SPINDLE	AISI 410 / AISI 304 / AISI 304L / AISI 316 / AISI 316L / ALLOY-20 / INCONEL	1 NO.
9	YOKE BUSH	GUN METAL / BRONZE	1 NO.
10	HANDWHEEL	S.G. IRON / M.I. / FAB. STEEL.	1 NO.
11	HANDWHEEL NUT	CARBON STEEL / STAINLESS STEEL	1 NO.

DIMENSIONS :-

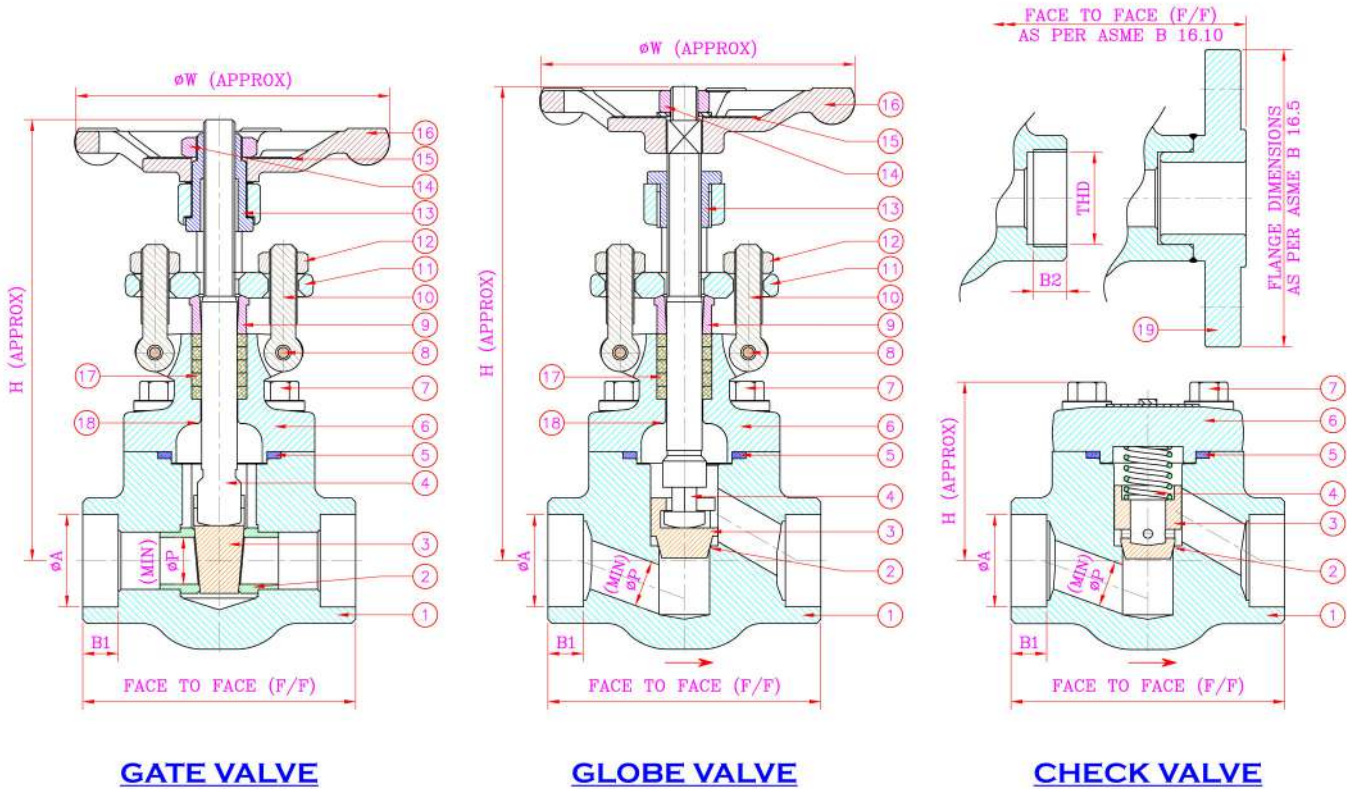
ALL THE DIMENSIONS ARE IN MM. UNLESS OTHERWISE STATED.

VALVE SIZE		F/F	øB	FLANGE AS PER ASME B 16.5, CLASS 150#						H	øW
NB	INCH			øD	øRF	T	øP	øM	N		
15	1/2"	130	15	88.9	35	11.2	60.3	16.0	4	105	100
20	3/4"	150	19	98.4	43	11.2	69.9	16.0	4	120	120
25	1"	160	25	108.0	51	11.2	79.4	16.0	4	130	140
32	1.1/4"	180	32	117.5	64	12.7	88.9	16.0	4	155	160
40	1.1/2"	200	38	127.0	73	14.2	98.4	16.0	4	185	180
50	2"	230	50	152.4	92	15.8	120.7	19.0	4	210	200
65	2.1/2"	290	65	177.8	105	17.4	139.7	19.0	4	300	250
80	3"	310	75	190.5	127	19.0	152.4	19.0	4	325	250
100	4"	350	100	228.6	157	23.8	190.5	19.0	8	370	280
150	6"	480	150	279.4	216	25.4	241.3	22.3	8	470	360

NOTE:-

1. RAISED FACE HEIGHT IS 2mm
2. WE ALSO OFFER RTJ, BUTT WELD END, ETC & 300#, 600#, 1500# & 2500# ON REQUEST

FORGED STEEL VALVE



GATE VALVE

GLOBE VALVE

CHECK VALVE

MATERIAL SPECIFICATION :-

SR. NO.	PART NAME	MATERIAL	QTY.
1	BODY	A105 / LF2 / F11 / F22 / F5 / F9 / F304L / F316L	1 NO.
2	SEAT RING	INTEGRAL+13% Cr OR ST-6 (GLOBE & CHECK) / AISI 410 / AISI 304 / AISI 304L / AISI 316 / AISI 316L / INCONEL	AS REQ.
3	WEDGE / PLUG	CA-15 / CF8 / CF3 / CF8M / CF3M / INCONEL	1 NO.
4	STEM	AISI 410 / AISI 304 / AISI 304L / AISI 316 / AISI 316L / INCONEL	1 NO.
5	GASKET	SS304 / SS304L / SS316 / SS316L (SPIRAL WOUNDED WITH GRAPHITE FILLER)	1 NO.
6	BONNET	A105 / LF2 / F11 / F22 / F5 / F9 / F304L / F316L	1 NO.
7	HEX BOLT	A 193 Gr. B7 / B8 / B16 / A 320 Gr. L7	4 NO.
8	EYE BOLT PIN	AISI 410 / AISI 304 / AISI 304L / AISI 316 / AISI 316L	2 NO.
9	GLAND BUSH	AISI 410 / AISI 304 / AISI 304L / AISI 316 / AISI 316L / INCONEL	1 NO.
10	EYE BOLT	A 193 Gr. B7 / B8 / B16 / A 320 Gr. L7	2 NO.
11	GLAND FLANGE	A105 / LF2 / F11 / F22 / F5 / F9 / F304L / F316L	1 NO.
12	EYE BOLT NUT	A 194 Gr. 2H / 4 / 8	2 NO.
13	YOKE SLEEVE	A 582 Gr. SS416	1 NO.
14	STEM NUT	A 194 Gr. 2H / 4 / 8	1 NO.
15	NAME PLATE	STAINLESS STEEL	1 NO.
16	HAND WHEEL	M.I. / SG IRON	1 NO.
17	GLAND PACKING	FLEXIBLE GRAPHITE RINGS	AS REQ.
18	BACK SEAT	INTEGRAL	-
19	FLANGE	A105 / LF2 / F11 / F22 / F5 / F9 / F304L / F316L	2 NO.

FORGED STEEL VALVE

DIMENSIONS :-

ALL THE DIMENSIONS ARE IN MM. UNLESS OTHERWISE STATED.

VALVE SIZE	MANUFACTURERS STD.									ASME B 16.11		ASME B 1.2.1		GATE VALVE			GLOBE VALVE			CHECK VALVE									
	800#			1500#			2500#			SOCKET END	(NPT / BSP)	H (OPEN/ CLOSE)			H (OPEN/ CLOSE)			H											
NB	INCH	F/F	ϕP	ϕW	F/F	ϕP	ϕW	F/F	ϕP	ϕW	ϕA	B1	B2	THD	800#	1500#	2500#	800#	1500#	2500#	800#	1500#	2500#						
10	3/8"	73	6.4	86	80	6.4	86	-	-	-	17.6	9.5	14.0	3/8"	151	135	151	138	-	159	143	160	148	-	53	56	-		
15	1/2"	73	9.5	86	80	9.5	86	100	7.0	116	21.8	9.5	14.0	1/2"	151	135	151	138	187	174	159	143	160	148	178	162	53	56	66
20	3/4"	80	12.7	86	100	12.7	116	120	12.5	150	27.2	9.5	16.0	3/4"	157	137	178	169	224	204	162	146	187	174	227	207	56	66	86
25	1"	100	17.5	116	120	15.9	150	130	15.5	150	33.9	12.5	20.0	1"	186	162	227	207	261	239	191	171	224	204	256	224	66	86	104
32	1.1/4"	120	23.8	150	130	22.2	150	140	21.5	225	42.7	12.5	20.0	1.1/4"	237	201	227	207	318	290	228	199	224	204	303	263	86	86	127
40	1.1/2"	120	28.6	150	130	27.0	150	140	26.5	225	48.8	12.5	24.0	1.1/2"	237	201	256	224	318	290	228	199	261	239	303	263	86	104	127
50	2"	130	36.5	150	140	34.9	225	-	-	-	61.2	16.0	26.0	2"	268	223	303	263	-	265	236	318	290	-	104	127	-		

NOTE:-

- FACE TO FACE DIMENSIONS WITH FLANGED END AS PER ASME B 16.10
- FLANGE AS PER ASME B 16.5
- 2500# VALVES ARE HAVING WELDED BONNET.
- IBR APPROVED & BUTT WELD END VALVES ARE ALSO PROVIDED ON REQUEST.



The manufacturer reserves the right to change product designs and specifications without notice.



Regd. Office & Works : 15 & 16, Jinaam Industrial Estate,
Near Dhumal Nagar, Waliv Road, Vasai (East),
Dist. Thane - 401 208, India. Tel.: +91 9833835078 / +91 9029969497
E-mail : john@alkatechvalves.com Website : www.alkatechvalves.com

AUTHORISED DEALER / STOCKIST :-